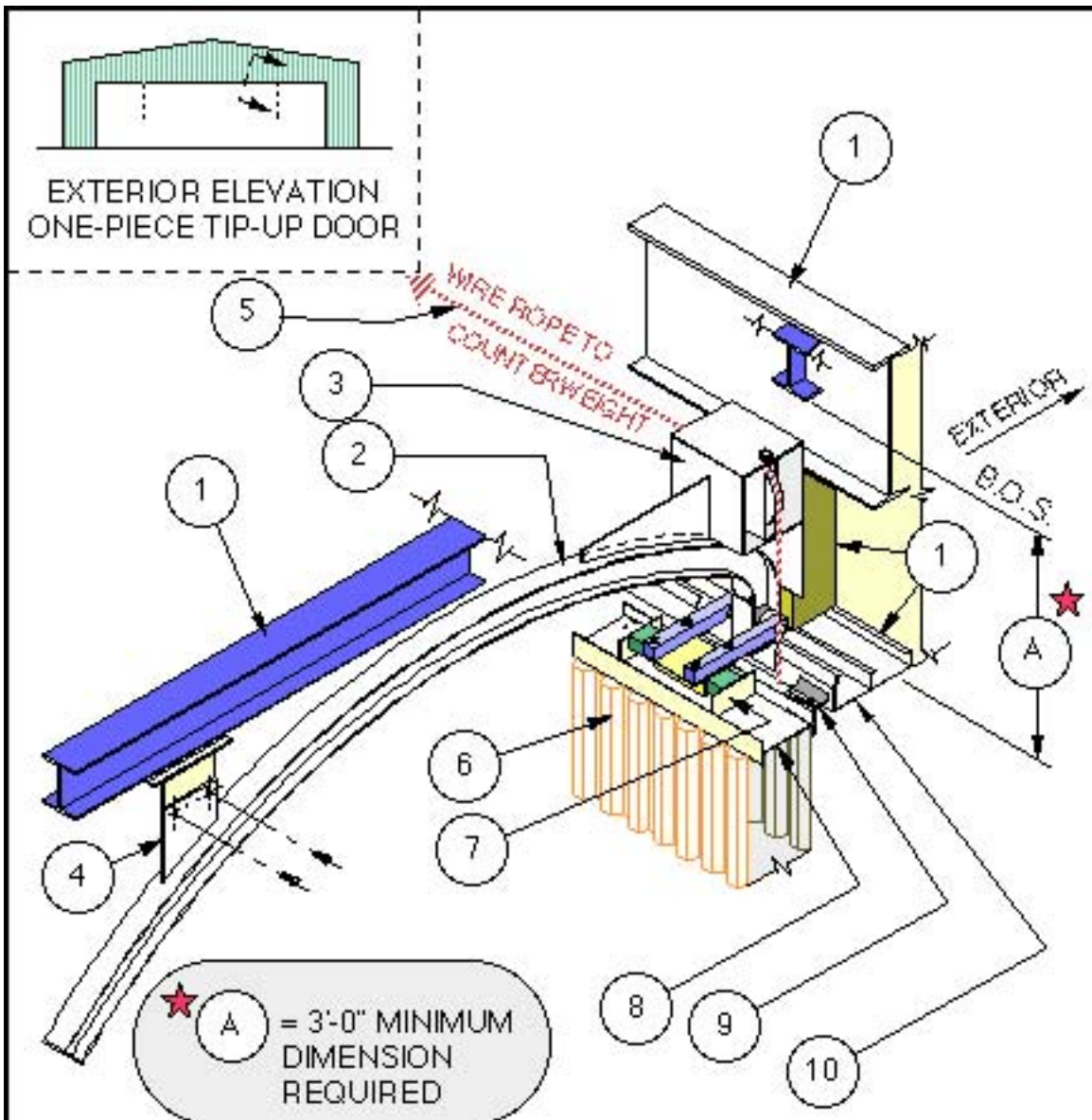


**VERTICAL SECTION THROUGH DOOR
(SHOWS DOOR IN OPERATION)**

NOTES:

- | | |
|--|-------------------------------|
| 1. BUILDING SUPPORT STEEL (BY OTHERS). | 4. SIDE ROLLER ASSEMBLY. |
| 2. TOP TRACK SYSTEM. | 5. ONE-PIECE TIP-UP DOOR. |
| 3. COUNTERWEIGHT ASSEMBLY. | 6. WIRE ROPE PICK-UP BRACKET. |
| | 7. FLOOR MOUNTED OPERATOR. |

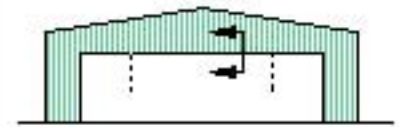


INTERIOR (ISOMETRIC VIEW) ELEVATION OF TOP TRACK SYSTEM (ONE-PIECE TIP-UP DOOR)

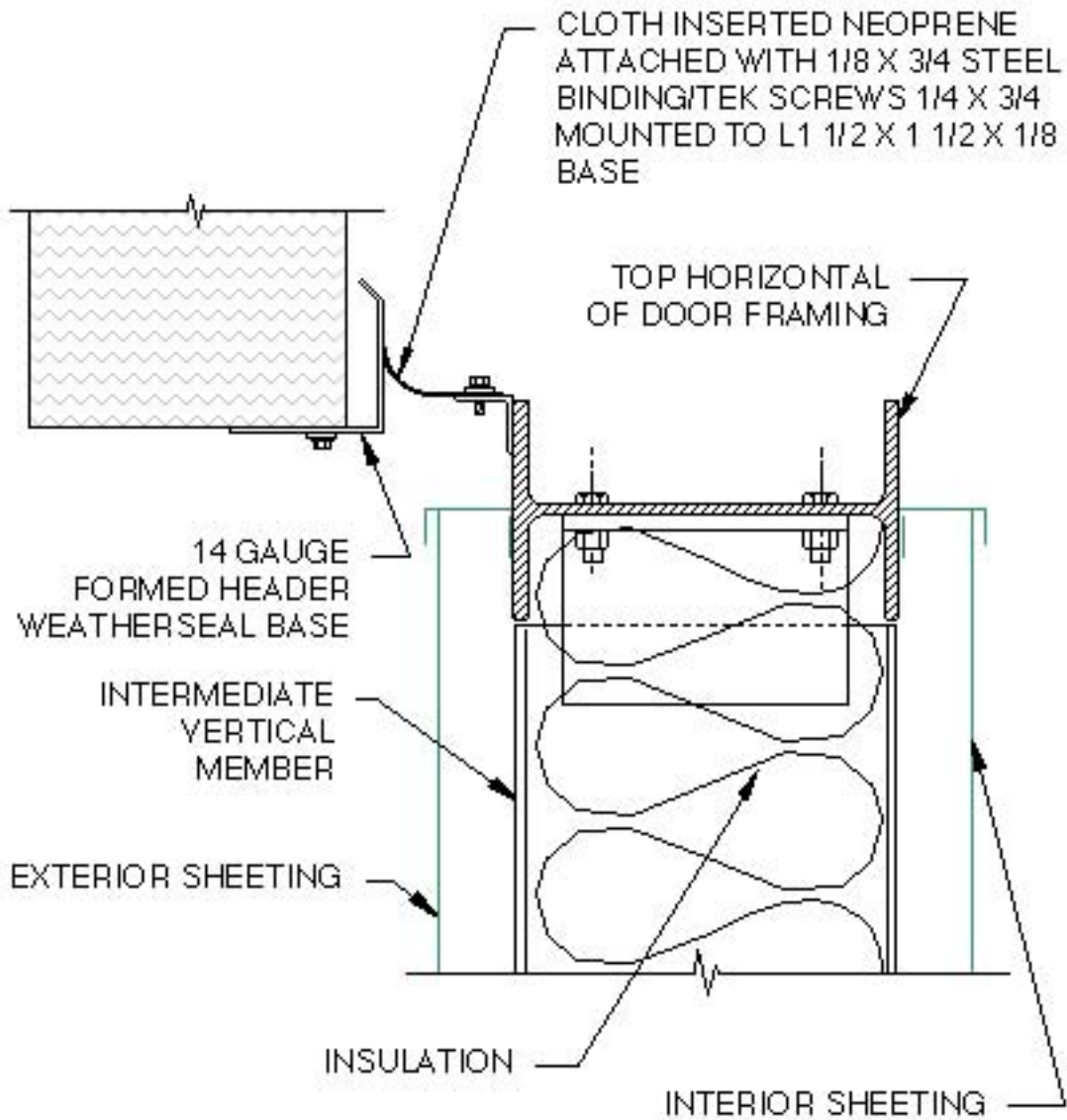
SCHMATIC

NOTES:

- | | |
|--|---|
| <ol style="list-style-type: none"> 1. BUILDING SUPPORT STEEL (BY OTHERS). 2. TOP TRACK SYSTEM. 3. SWIVEL SHEAVE/HOUSING PART OF THE TOP TRACK SYSTEM. 4. TOP TRACK SYSTEM BACK SUPPORT BRACKET. 5. WIRE ROPE ATTACHED TO EXTERIOR MOUNTED PICK-UP BRACKET (LOCATED AT EACH TOP TRACK SYSTEM). | <ol style="list-style-type: none"> 6. INTERIOR/EXTERIOR SHEETING (BY OTHERS). 7. ADJUSTABLE TOP ROLLER ASSEMBLY. 8. DOOR FRAMING. 9. HEADER WEATHERSEAL (CLOTH INSERTED NEOPRENE ATTACHED WITH BINDING STRIP AND FASTENERS 9" O.C. 10. HEADER WEATHERSEAL STAND-OFF. |
|--|---|



EXTERIOR ELEVATION
ONE-PIECE TIP-UP DOOR



CLOTH INSERTED NEOPRENE
ATTACHED WITH 1/8 X 3/4 STEEL
BINDING/TEK SCREWS 1/4 X 3/4
MOUNTED TO L1 1/2 X 1 1/2 X 1/8
BASE

TOP HORIZONTAL
OF DOOR FRAMING

14 GAUGE
FORMED HEADER
WEATHERSEAL BASE

INTERMEDIATE
VERTICAL
MEMBER

EXTERIOR SHEETING

INSULATION

INTERIOR SHEETING

HEADER WEATHERSEAL SECTION

